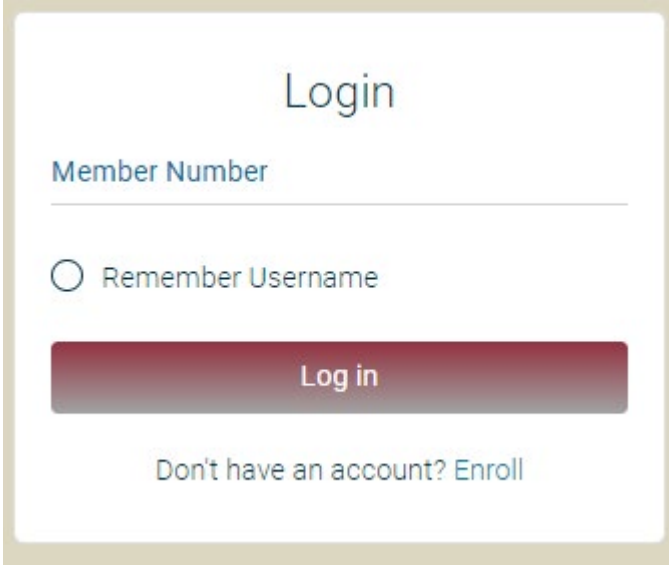


Home Banking Sign Up

Home Banking Walkthrough

Here are the instructions on how to sign up for City of Firsts Community FCU home banking.

1. Go to <https://bsdc.onlinecu.com/cityoffirsts/#/>



Login

Member Number

Remember Username

Log in

Don't have an account? [Enroll](#)

2. First time users will need to select “Enroll”. They will need to enter their member number, email address, social security number, postal code, home phone number, and birth date. They will then need to click the box to acknowledge the User Agreement and click the box labeled “Sign Up”.

Home Banking Sign Up

Home Banking Walkthrough

Sign Up for Home Banking

You must currently be a member of this credit union to sign up for Home Banking, please enter your information below.

Member Number

E-mail

Confirm Email

Social Security Number

Postal Code

Home Phone Number

Date of Birth

I acknowledge and agree I have read the terms of the [HB Disclosure](#)

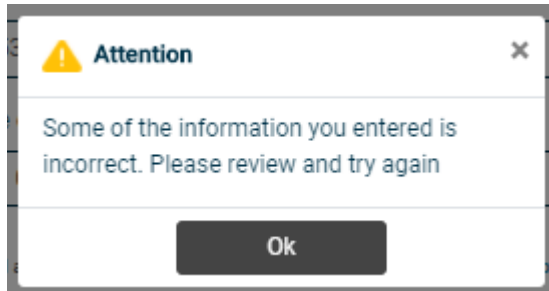
Sign Up

Cancel

Home Banking Sign Up

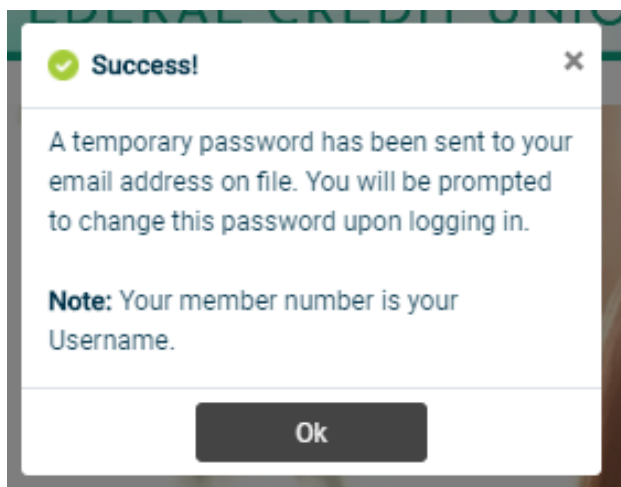
Home Banking Walkthrough

NOTE: You do not need to have an email address on file with the credit union in order to enroll in home banking. However, if any other information above doesn't match what is on file, you will get the following message.



If you are certain that the information being entered to enroll is accurate - you will need to contact the CU and have them correct the information in your Member Properties.

3. If all of the information is acceptable – once you click on the “sign up” button – you will receive the following pop-up and be sent back to the front page.



The email will look like this. **NOTE:** if you do not receive this email, check your spam folders.

Home Banking Sign Up

Home Banking Walkthrough



Home Banking Administrator <noreply-msdhsfcu@onlinecu.com>

Home Banking Alert

This is an alert message from the Home Banking System.

Please logon and change your password.

Thank You
System Admin

Your new password is: 6433164

4. Using your member number for the username and the temporary password sent to your email, you should log back into home banking. This will now prompt the user to update their password. The new password should contain Uppercase, Lowercase, Numbers, Special Characters, and a minimum length of 8 characters.

Update Password

Password

New Password

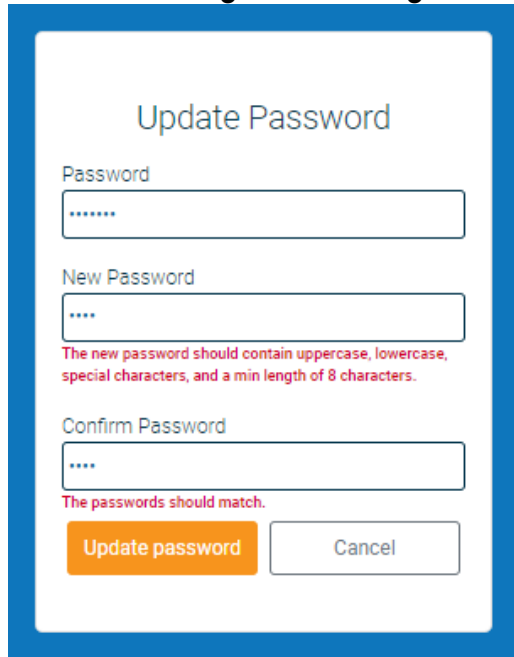
Confirm Password

Update password Cancel

Should the new password not meet the Credit Unions required standards of a password, you will get this message when you hit "Update password"

Home Banking Sign Up

Home Banking Walkthrough



The screenshot shows a web form titled "Update Password" with a blue border. It contains three input fields: "Password" (with 6 dots), "New Password" (with 4 dots), and "Confirm Password" (with 4 dots). Below the "New Password" field is a red error message: "The new password should contain uppercase, lowercase, special characters, and a min length of 8 characters." Below the "Confirm Password" field is a red error message: "The passwords should match." At the bottom are two buttons: "Update password" (orange) and "Cancel" (white).

5. You will then have to answer a series of three authentication questions and select a “confidence word”. There is a choice of different authentication questions if you select the arrow next to each question. After selecting the desired question, please input your desired answer.
 - a. If you log-in from another computer, the system will make you answer one of your Authentication Questions to verify who they are.
 - b. **Confidence Word:** This is a word or phrase that will show on their log-in screen to let you know that you have come to the authentic site for Home Banking.

Home Banking Sign Up

Home Banking Walkthrough

Security Questions

What is the name of your first pet? >

Where did you meet your spouse for the first time? >

In what year (YYYY) did you graduate from high school? >

Confidence Word

6. After completing Authentication Questions, you should automatically be signed into your home banking.

